

Notes:

- Please read attached instructions before you proceed.
- Remember to embed your image and make sure that it is at high resolution (at least 300 DPI).
- Spine material colour is the colour you selected for your order.
- Front Cover material is natural timber.
- “Your Artwork” layer must be visible and separated from the template and instructions layers.

Binder Template & Artwork



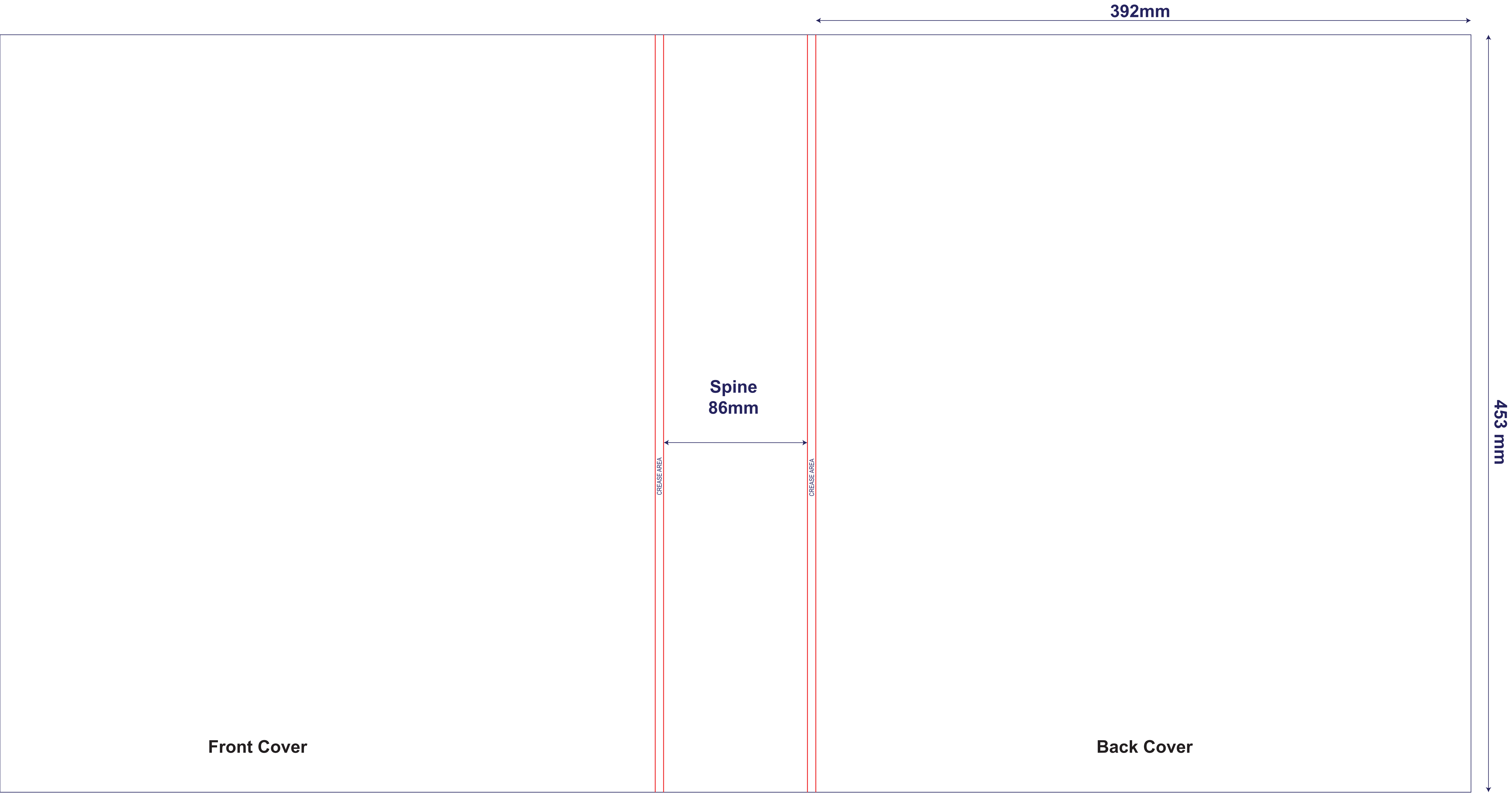
**Please place another copy of your artwork to scale
without the template on this page**

Edge of front cover

Crease line along the spine

- Notes:
- Please read attached instructions before you proceed.
 - Remember to embed your image and make sure that it is at high resolution (at least 300 DPI).
 - Slipcase material colour is the colour that matches your binder.
 - “Your Artwork” layer must be visible and separated from the template and instructions layers.

Slipcase Template & Artwork



**Please place another copy of your artwork to scale
without the template on this page**