



- Notes:
- Please read attached instructions before you proceed.
  - Remember to embed your image and make sure that it is at high resolution (at least 300 DPI).
  - Spine material colour is the colour you selected for your order.
  - Front Cover material is natural timber.
  - “Your Artwork” layer must be visible and separated from the template and instructions layers.

Binder Template & Artwork

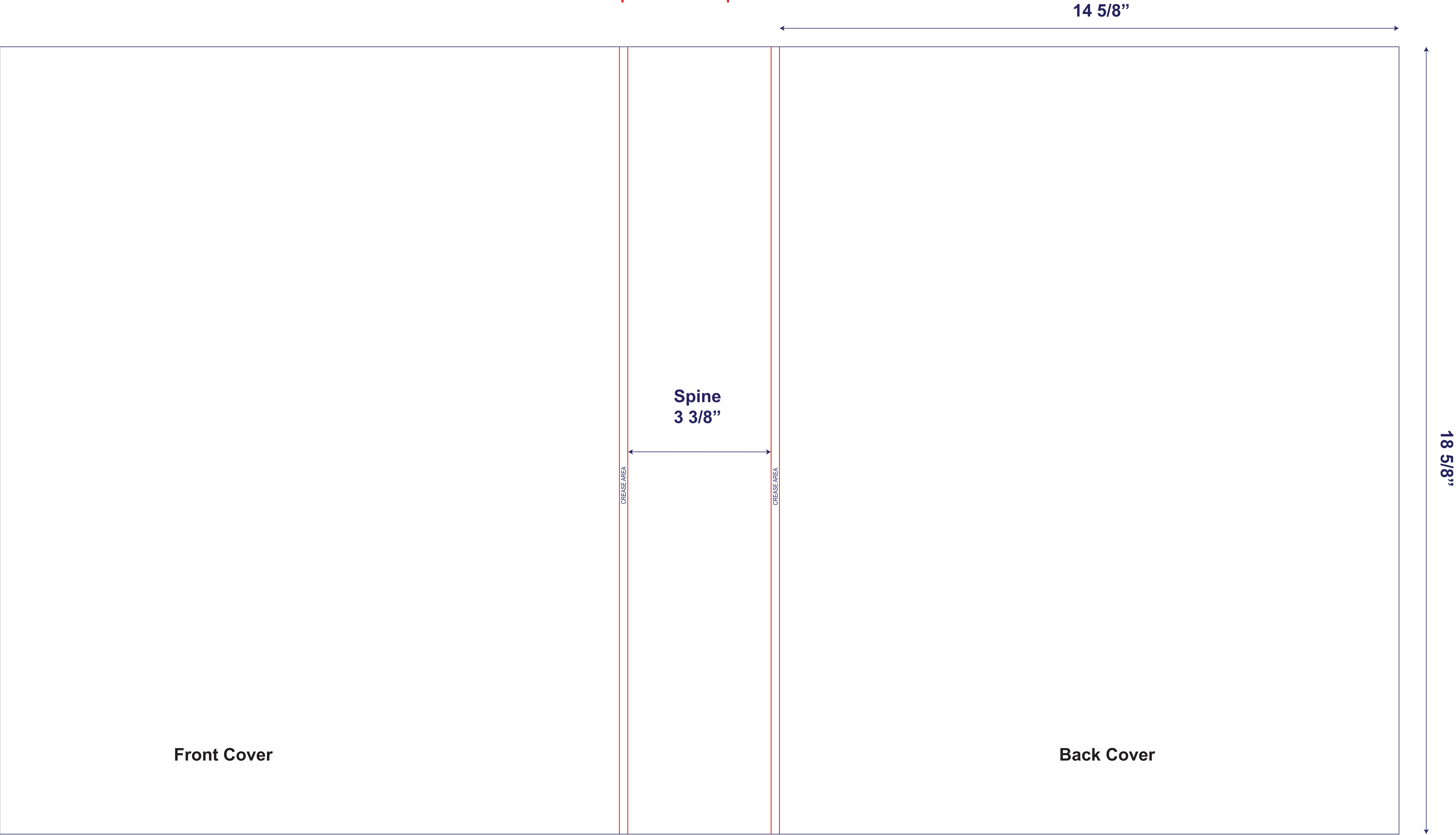
**Please place another copy of your artwork to scale  
without the template on this page**

Edge of front cover

Crease line along the spine

- Notes:
- Please read attached instructions before you proceed.
  - Remember to embed your image and make sure that it is at high resolution (at least 300 DPI).
  - Slipcase material colour is the colour that matches your binder.
  - “Your Artwork” layer must be visible and separated from the template and instructions layers.

Slipcase Template & Artwork



**Please place another copy of your artwork to scale  
without the template on this page**