

# FC PORTFOLIOS

## 4-Sided Presentation Box

### CMYK Digital Print Instructions

#### Artwork Quality Requirement

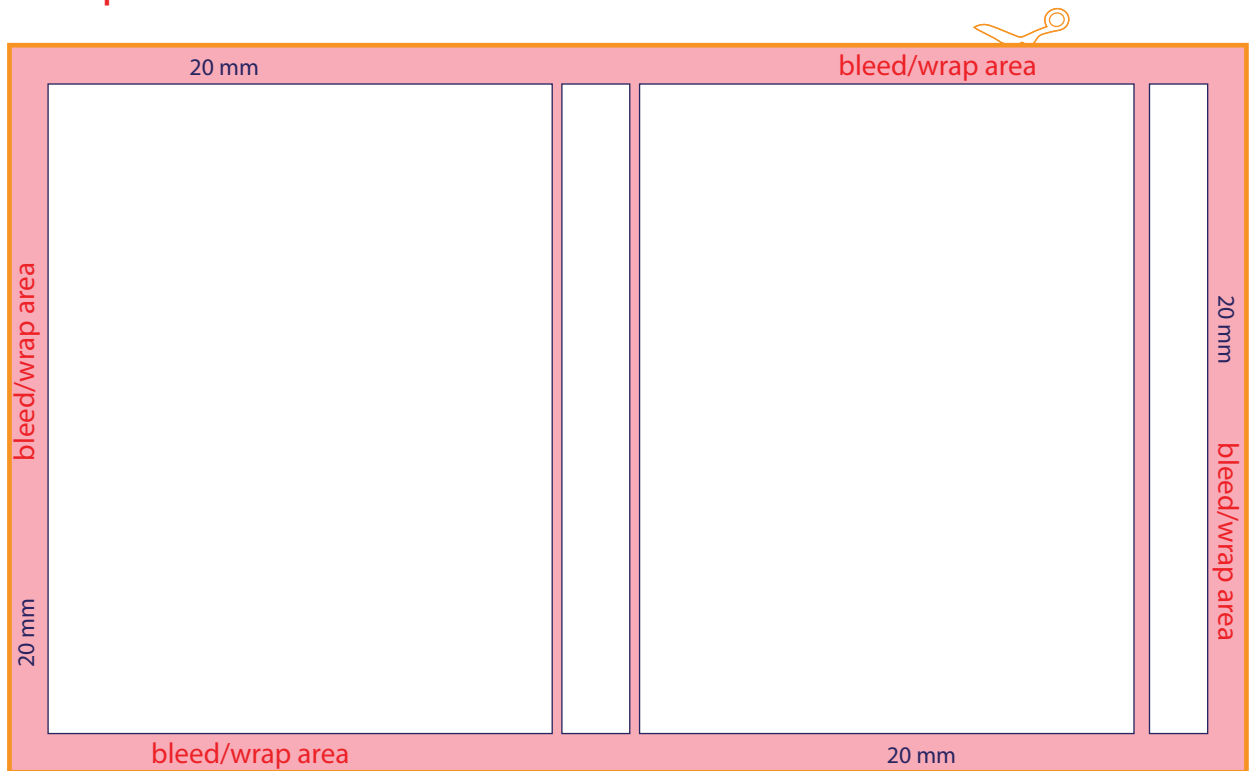
If your artwork is a **raster** (e.g. .tiff, .jpg, .png, .bmp) image, please make sure of the following:

- Artwork must be at least 300 DPI or it will print pixelated.
- Saved as **CMYK**, **NOT** RGB.

If your artwork is a **vector** (e.g. .eps, .ai, .pdf, .svg) image, please make sure of the following:

- All text is converted to outlines to ensure that it is displayed correctly when printed.
- Saved as **CMYK**, **NOT** RGB.

#### Artwork placement instructions



- Spine Area
- End of bleed area
- Edge of Cover & back area
- Bleed/wrap area

- Please bleed all artwork to the yellow line.
- Any unprinted area will remain the natural colour of the material, which is white cloth.
- All images must be embedded in the file.
- Place a copy of your artwork without the template on the second page of the template file.

# FC PORTFOLIOS

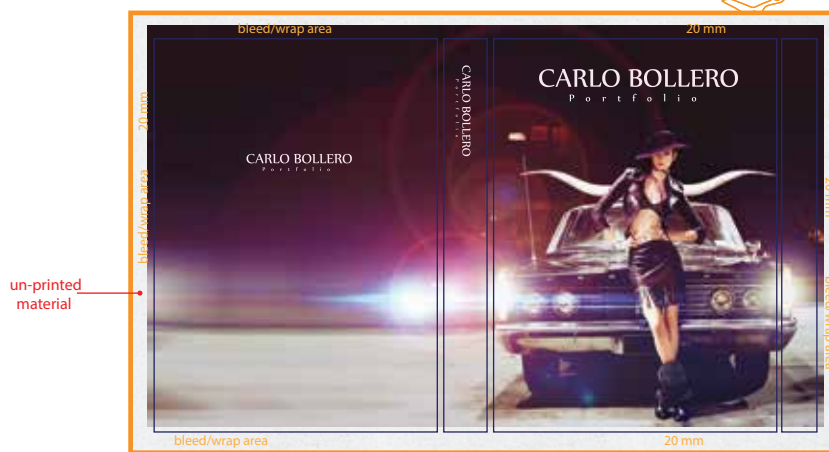
## 4-Sided Presentation Box - CMYK Digital Print Template Instructions

### ! Please note:

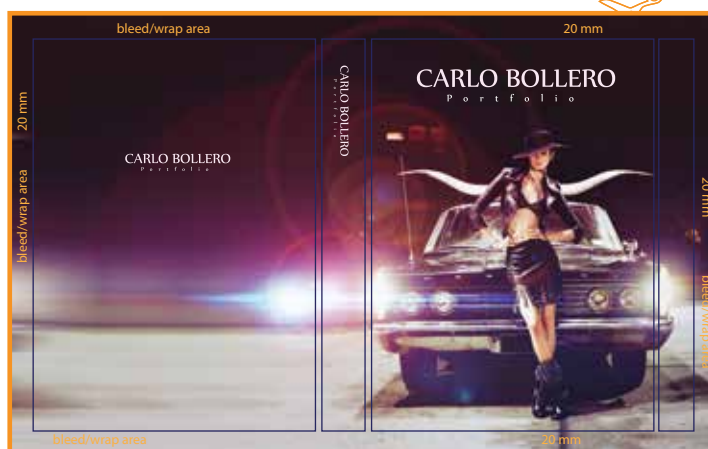
- Submitted artwork is treated as approved artwork.
- We can only reproduce the quality you provide.  
Remember if the artwork looks pixelated on your screen, it will print pixelated as well.

## Print Example

Incorrect placement of artwork on template



Correct placement of artwork on template



Finished Product

